



Visit us: www.karanjiacollege.com
Email Id: karanjianet@rediffmail.com
Fax: 06796 -220236
Phone: 06796 -220236 (O)
06796 -220263 (R)

**OFFICE OF THE PRINCIPAL KARANJIA AUTONOMOUS COLLEGE, KARANJIA
DIST- MAYURBHANJ, PIN- 757037 (ODISHA)
(NAAC 3RD CYCLE RE-ACCREDITED-B)
ESTD - 1964**

No. 587

Date. 16.04.2026

QUOTATION CALL NOTICE

Sealed quotations are invited from the intending firms for supply and installation of New Hydrant Line Work of New Academic Building (Ground Floor & 1st floor) comprising of 10 Nos. of 32 seated and 09 Nos. of 64 seated classrooms along with 04 Nos. of Toilets. The details of floor plans and scheduled of doors and windows of the building are provided in the website (www.karanjiacollege.com) for reference. The quotation should reach the office of the undersigned on or before 27.04.2026 (05.00PM). The quotation(s) received after the due date shall not be entertained.

While quoting the parties are required to submit the following documents:

- 1. Mention Brand name of the items to be quoted.**
- 2. Copy of the GST registration certificate.**
- 3. Copy of PAN Card.**

(Quoted Price must be inclusive of GST)

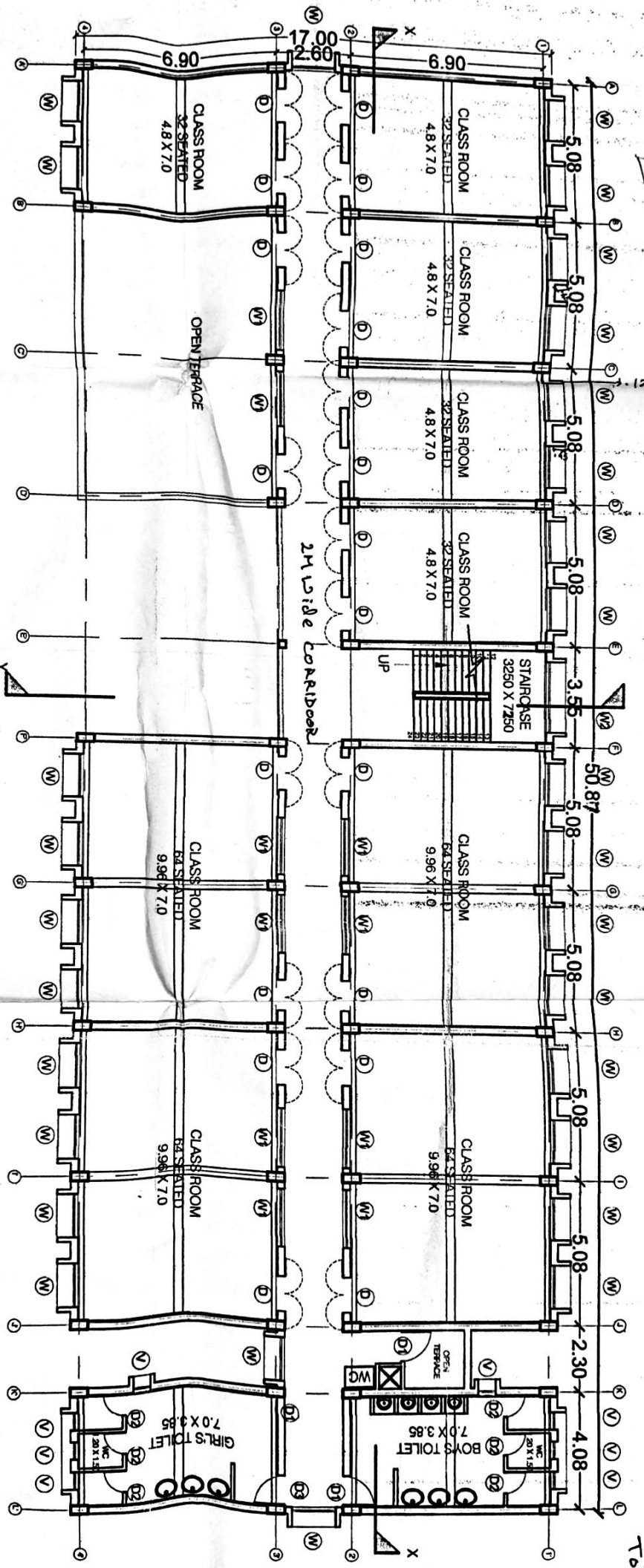
Opening of quotations on 28.04.2026 at 11.00AM in the chamber of the undersigned. The bidders are allowed to remain present by self or by their authorized representatives at the time of opening of quotations.

The undersigned reserves the right to reject any or all the quotations without assigning any reason thereof.


Principal
Karanjia Autonomous College, Karanjia
Mayurbhanj
Karanjia Autonomous College
Karanjia, Mayurbhanj

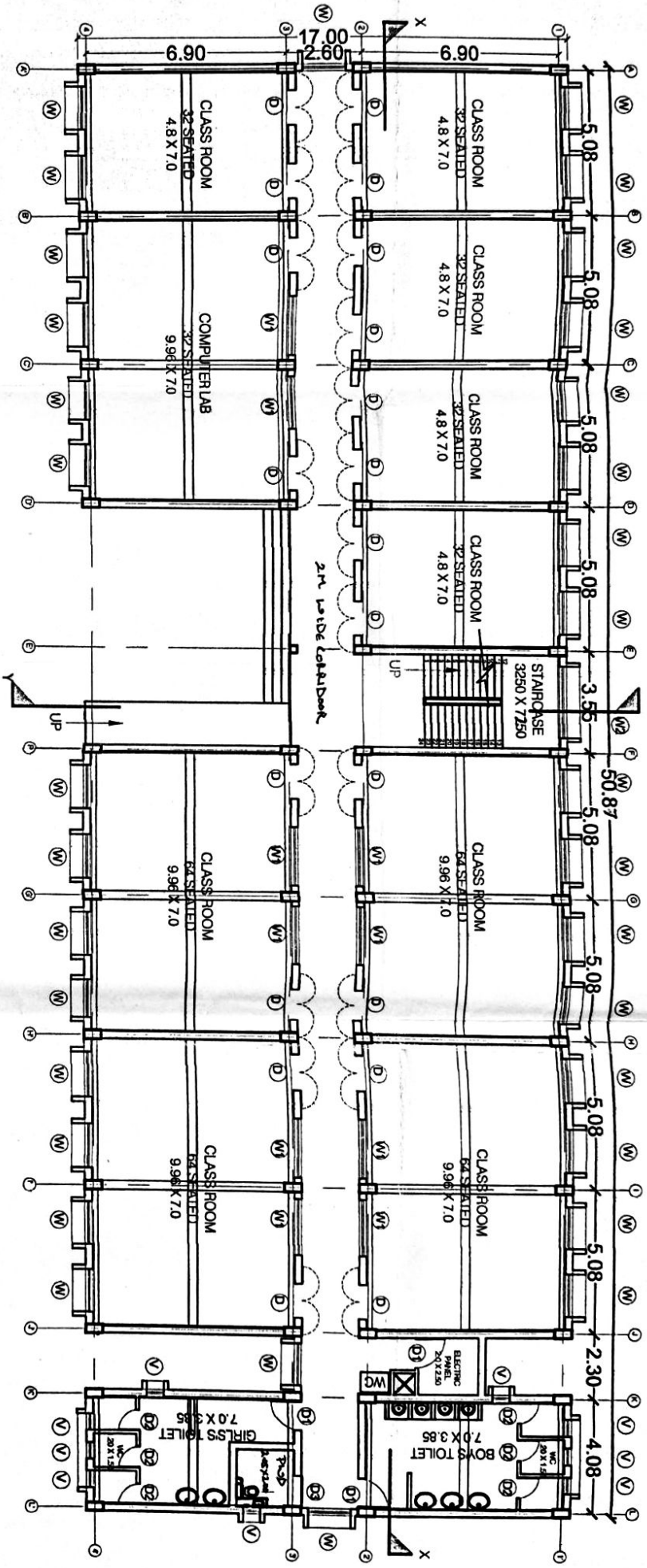
Copy to the Website / college notice boards for wide circulation.

Prepared by Sk. Niaj Ali
On 16.04.2026



FIRST FLOOR PLAN

Toilets



GROUND FLOOR PLAN

SCHEDULE OF DOORS AND WINDOWS

SL.NO	TYPE	SIZE	SILL LVL.	LINTEL LVL.	DESCRIPTION	LOCATION
1	D	1.20M X 2.10M	-	2.10M	DOUBLE LEAF	CLASS ROOM DOORS
2	* D1	1.05M X 2.10M	-	2.10M	SINGLE LEAF	TOILET MAIN, ELECTRIC PANEL ROOM DOORS
3	* D2	0.75M X 2.10M	-	2.10M	SINGLE LEAF	TOILET CUBICAL DOORS
4	* D3	1.15M X 2.10M	-	2.10M	SINGLE LEAF	PERSON WITH HANDICAP TOILET DOORS
5	D4	1.20M X 2.10M	-	2.10M	DOUBLE LEAF	STORES, UNIVERSITIES, KITCHENS
6	W	1.50M X 2.10M	0.90M	3.00M/BEAM BOTTOM	OPENABLE WINDOW WITH 2 PART TOP FIXED	ALL OUTER FACADE WINDOWS
7	W1	2.00M X 1.20M	0.90M	2.10M	THREE TRACK THREE PANE SLIDING WINDOW	ALL INNER FACADE WINDOWS
8	W2	2.50M X 1.20M	0.90M	2.10M	THREE TRACK THREE PANE SLIDING WINDOW	STAIRCASE WINDOWS
9	V	0.60M X 0.60M	1.50M	2.10M	VENTILATOR/TOP HUNG	TOILETS

TOILET DOORS - D1, D2, D3 (*)
 UPVC IN CORSTAL AREAS
 MS DOORS IN OTHER COLLEGES



UPVC
 UPVC
 UPVC
 UPVC
 UPVC
 UPVC
 UPVC